

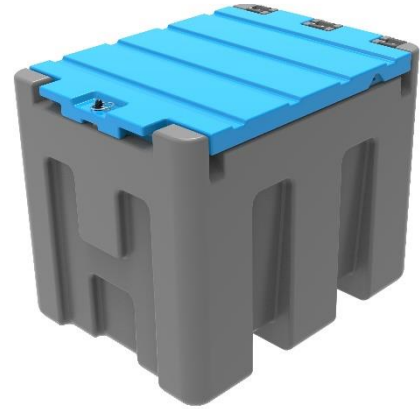
Harlequin® Storage Tanks

RELIABLE CONTAINERS

Harlequin 220LT Portable AdBlue Tank

Tank Dimensions:

- ◆ Width: 800mm
- ◆ Depth: 600mm
- ◆ Overall Height: 645mm
- ◆ Brimful Capacity: 220L
- ◆ Net Weight: 28kg



The 220LT Harlequin Portable AdBlue Tank is used to dispense AdBlue from a static location. Specialist driver qualifications or vehicle modifications are not required to use the tank. AdBlue can be transported simply by loading the tank onto the vehicle saving valuable time and money. It enables safe dispensing of AdBlue without having to bring the vehicle to the pumps. We also have 440LT AdBlue, 220LT & 440LT diesel versions.

Standard Features:

- ◆ Moulded from durable medium density polyethylene material
- ◆ 36L/Min 12Volt AdBlue pump with 4m cable & clips
- ◆ 4m delivery hose with auto shut-off dispensing nozzle
- ◆ ¾" suction pipe with non-return valve & strainer
- ◆ 4" filler cap
- ◆ Splash-proof vent
- ◆ Forklift channels
- ◆ Strapping points

Optional Equipment:

- ◆ 36L/Min 24Volt AdBlue pump

Issued By:

Harlequin Manufacturing Limited
21 Clarehill Road, Moira, Co. Armagh, N.Ireland, BT67 0PB
T: +44 (0)28 9261 1077
W: www.harlequin-mfg.com
E: info@harlequin-mfg.com