

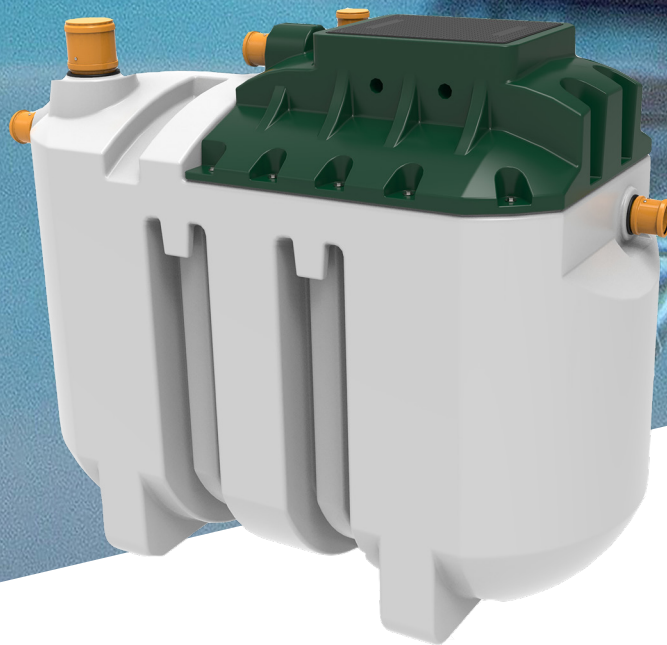
DOMESTIC | COMMERCIAL | AGRICULTURAL

Harlequin®
HydroClear

SEWAGE TREATMENT PLANT

TRUSTED & RELIABLE

SEWAGE TREATMENT SYSTEMS



TANK LIFE
EXPECTANCY

FREE
SITE VISIT
AVAILABLE

 @harlequinMFG

www.harlequinplastics.co.uk

Harlequin®
MANUFACTURING FOR TOMORROW



A member of

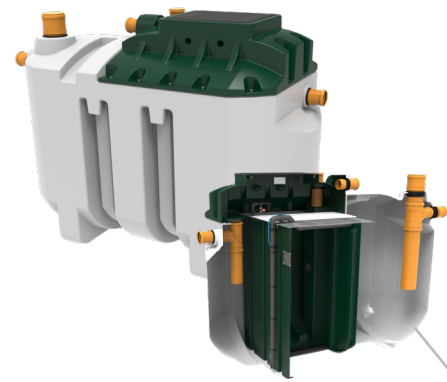
BRITISH WATER



HYDROCLEAR RANGE













The Hydroclear range of Sewage Treatment Plants have been treating and discharging sewage waste from thousands of homes, farms and businesses for over 20 years. New modern designs have meant the range has an unparalleled reputation for easy installation and consistent results year in, year out with minimal maintenance. HydroClear systems come equipped with an energy efficient, super quiet treatment reactor to clean sewage waste to an extremely high degree suitable for discharge to both watercourse and drainage fields. Encased in a tough robust MDPE body ensures the systems have a long life.

What sets the Hydroclear apart is the minimal aesthetic effect in the garden, with the system being designed for maximum concealment and the ability to move the above ground part of the system anywhere more suitable to your garden. †



Internal view of a HydroClear 6

KEY FEATURES

- | | |
|--|--|
|  Super Quiet* |  Power Failure Default |
|  Pollutant Removal Level of 97.5%** |  Compact System |
|  Durable & Stable MDPE Design |  2 Year Warranty*** |
|  Odourless |  Small Low Profile Covers |
|  Reliable MBBR System |  Suitable for Trafficked Areas**** |
|  Low Maintenance Costs |  Certified for use in the UK in compliance with EN12566-3 |

HOW IT WORKS?

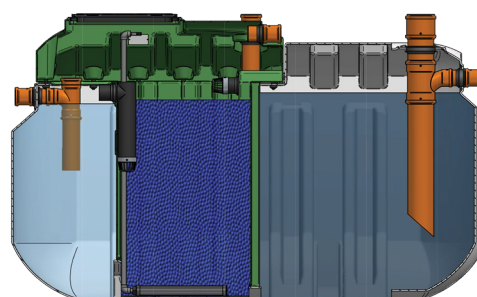
Primary Settlement Zone - Wastewater from the property feeds directly into the primary chamber of the treatment plant. Solid matter settles at the bottom of this tank and begins to biodegrade as part of the aerobic process. Effluent from the primary settlement zone then flows into the reactor zone.

Reactor Zone – A bubble air diffuser is positioned at the bottom of the reactor zone which ensures that the media is always moving freely. As the effluent passes over the media, it is purified by micro-organisms growing on the surface. The circulation of the media and the liquids are made possible by a small air compressor and housing at ground level.

Final Settlement Zone - Finally, the treated effluent flows into the final settlement zone where very small levels of remaining solids settle to the bottom, after which the final effluent is suitable to discharge to a watercourse or drainage field.

MARKET LEADING POLLUTANT REMOVAL

97.5%

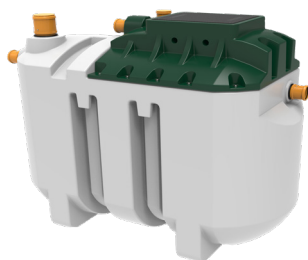


Primary Settlement Zone

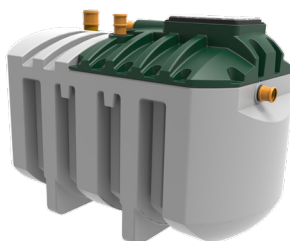
Reactor Zone

Final Settlement Zone

SMALL DOMESTIC PLANTS



HydroClear 6
(Up to 4 Bedroom Homes)



HydroClear 9
(Up to 7 Bedroom Homes)



HydroClear 12
(Up to 10 Bedroom Homes)

LARGER MUNICIPAL OR COMMERCIAL PLANTS

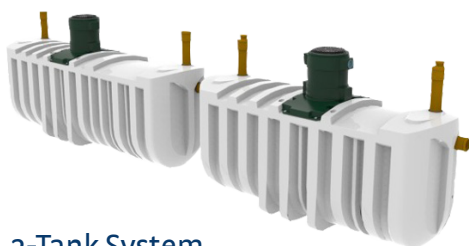


HydroClear 20



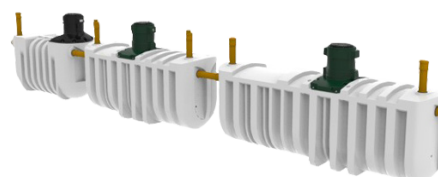
2-Tank System

HydroClear 30



2-Tank System

HydroClear 40



3-Tank System

HydroClear 50

EXTERNAL BLOWER

The HydroClear plants come with an external blower for optimal performance. The blower is located in a weatherproof aboveground external housing.



- * When installed in accordance with manufacturers instructions
- ** Pollutant Removal of 97.5% refers to HC6, 9 & 12
- *** 2 year warranty only when product is registered on our website
- **** Subject to a suitable slab designed by a Structural Engineer
- † Within 10m of the tank



**SUPER
QUIET***

PRODUCT SPECIFICATIONS

Model	HC6	HC9	HC12 (From May 2022)	HC20	HC30 (2-tank System)	HC40 (2-tank System)	HC50 (3-tank System)
Population Served	1-6	7-9	10-12	13-20	21-30	31-40	41-50
Desludging Intervals (Months)	12*	12*	12*	6*	6*	6*	6*
Inlet Invert (mm)	500	500	600	1090	1100	1100	1100
Outlet Invert (mm)	690	660	750	1140	1150	1150	1150
Blower Ratings	76W	76W	105W	112W	149W	216W	240W
Length (mm)	2400	2900	3615	5680	1 - 4500 2 - 4500	1 - 4500 2 - 5680	1 - 5680 2 - 4500 3 - 3400
Width (mm)	1200	1620	1620	1400	1 - 1400 2 - 1400	1 - 1400 2 - 1400	1 - 1400 2 - 1400 3 - 1250
Height (mm)	2000	2000	2140	2560	1 - 2560 2 - 2560	1 - 2560 2 - 2560	1 - 2560 2 - 2560 3 - 2560
Weight (Kg)	330	430	600	700	1 - 450 2 - 630	1 - 450 2 - 790	1 - 490 2 - 780 3 - 320
Cover Sizes (mm)	600x450	600x450	600x450	450	450	450	450

Manhole riser kits available | Pumped outlets available | *Desludge interval depending on usage

PUMP STATIONS

Harlequin range of Pump Stations are designed to transfer sewage, effluent or surface water to a local drain, private manhole or mains sewer where a gravity fall is not possible. They are best suited for use in a domestic setup and are available in Single or Twin options. They are used for sewage/effluent applications including post wastewater treatment systems, sewage directly from the home, and applications requiring a grinder pump.



KEY FEATURES

- Suitable for domestic use
- 24-hours storage
- Durable & Stable MDPE Design
- Compact System
- Easy to Install
- Low Maintenance
- Market Leading DAB Pump
- Simple Pipework
- Flat reinforced base for stability



Internal view of an 800 litre twin Pump Station

Model	Length (mm)	Width (mm)	Height (mm)	Capacity (Litres)	Weight (Kg)	Population Served
450 Litres	600	600	1700	455	45	Single Person Dwelling
800 Litres	1000	1000	1225	820	60	1-5
1100 Litres	1000	1000	1645	1140	72	1-7
1550 Litres	1200	1200	1625	1600	85	1-10
3200 Litres	1200	1200	3205	3300	140	Shared domestic or small commercial applications

Please Note: Actual product colours may vary from colours shown. All information contained herein is understood to be correct at time of publication. Harlequin Manufacturing Ltd. reserve the right to amend product specifications without notice. Please check our website for the most up to date product information.